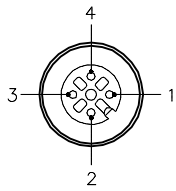


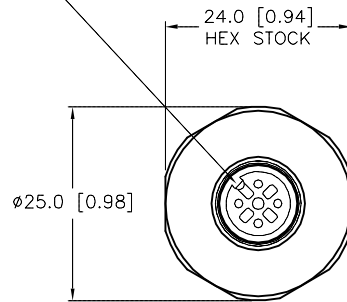
## FEMALE END VIEW



1 = BROWN  
2 = WHITE  
3 = BLUE  
4 = BLACK

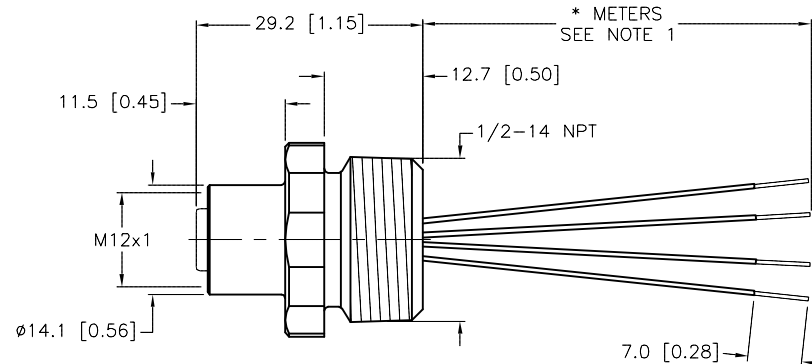


KEYWAY ORIENTATION MAY  
VARY FROM WHAT IS SHOWN



## SPECIFICATIONS

|                               |                                  |
|-------------------------------|----------------------------------|
| CONTACT CARRIER MATERIAL      | NYLON OR TPU                     |
| CONTACT MATERIAL/PLATING      | BRASS/GOLD                       |
| HOUSING MATERIAL/PLATING      | BRASS/NICKEL                     |
| RATED CURRENT [A]             | 4.0 A                            |
| RATED VOLTAGE [V]             | 250 V                            |
| CONDUCTOR INSULATION MATERIAL | PVC                              |
| NUMBER OF CONDUCTORS [AWG]    | 4x18 AWG                         |
| TEMPERATURE RATING            | -40°C to +80°C (-40°F to +176°F) |
| PROTECTION CLASS              | MEETS NEMA 1,3,4,6P AND IEC IP68 |

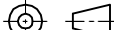
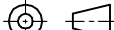


| CABLE LENGTH                 | TOLERANCE*  |
|------------------------------|---|
| ALL LENGTHS                  | + 4% (OR 50mm) OF LENGTH<br>- 0% (OR 0mm) OF LENGTH<br>WHICHEVER IS GREATER |
| STRIP LENGTH                 | TOLERANCE*  |
| 0-7mm                        | ±0.5mm  |
| 8-29mm                       | ±1.0mm  |
| 30-49mm                      | ±2.0mm  |
| 50-69mm                      | ±3.0mm  |
| 70-100mm                     | ±4.0mm  |
| OVER 100mm                   | ±5.0mm  |
| * UNLESS OTHERWISE SPECIFIED |   |

## NOTES:

- "\*" INDICATES LEAD LENGTH IN METERS. CONTACT TURCK TO ORDER SPECIFIC LENGTHS.
- "/S613" DESIGNATES 18 AWG CONDUCTORS.

SOURCE DRAWING - FOR REFERENCE ONLY

|   |  |   |  |   |       |          |   |              |
|---|--|---|--|---|-------|----------|---|--------------|
| RELATED DOCUMENTS<br><br>1.<br><br>2.<br><br>3.<br><br>4. | 3RD ANGLE<br>PROJECTION  |  | THIS DRAWING IS<br>CONFIDENTIAL AND THE<br>PROPERTY OF TURCK<br>INC. USE OF THIS<br>DOCUMENT WITHOUT<br>WRITTEN PERMISSION IS<br>PROHIBITED. | <div>TURCK</div> <div>3000 CAMPUS DRIVE<br/>MINNEAPOLIS, MN 55441<br/>1-800-544-7769<br/>(763) 553-7300<br/>(763) 553-0708 fax<br/>www.turck.us</div> |       |          |   |              |
|   |  |   |  |   |       |          |   |              |
| MATERIAL<br><br>SEE SPECIFICATIONS                        | ALL DIMENSIONS<br>DISPLAYED ON THIS<br>DRAWING ARE FOR<br>REFERENCE ONLY |  | DRFT   | RWC   | DATE  | 01/25/06 | DESCRIPTION<br><br>FK 4.4-*/14.5/NPT/S613 |              |
| FINISH<br><br>SEE SPECIFICATIONS                          |  |   | APVD   |   | SCALE | 1=1.0    |   |              |
|   |  |   | UNIT OF MEASUREMENT<br><br>MILLIMETER [ INCH ]   |   |       |          | IDENTIFICATION NO.                        | REV<br><br>D |
|   |  |   | DO NOT SCALE THIS DRAWING  |   |       |          |   |              |
|   |  |   | CONTACT TURCK<br>FOR MORE<br>INFORMATION   |   |       |          | FILE: 777012401                           | SHEET 1 OF 1 |

|     |  |     |          |         |
|-----|--|-----|----------|---------|
| D   | DRAWING PROCESSED AS PART OF ECO 33971 | CBM | 04/06/11 | 33971   |
| REV | DESCRIPTION                            | BY  | DATE     | ECO NO. |